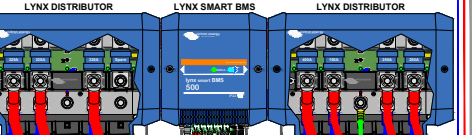


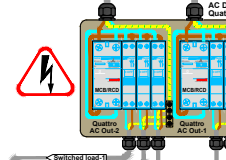
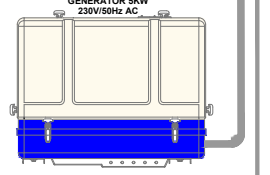
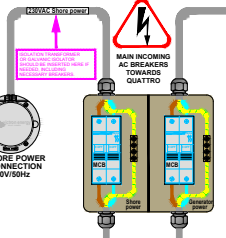
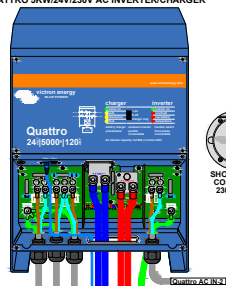
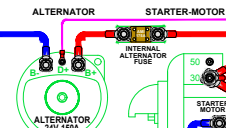
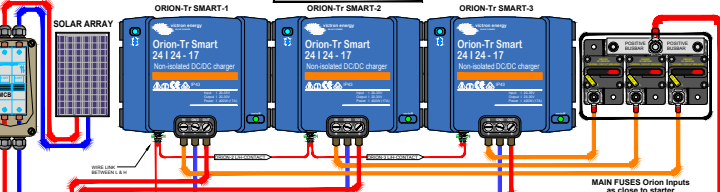
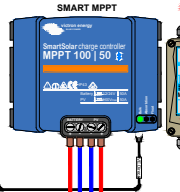
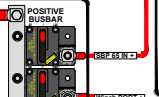
KEEP POSITIVE BATTERY CABLES ALL AS SHORT AS POSSIBLE AND ALL AT THE SAME LENGTH!
 KEEP NEGATIVE BATTERY CABLES ALL AS SHORT AS POSSIBLE AND ALL AT THE SAME LENGTH!



IMPORTANT INFORMATION!
 The SmartBatteryProtects must be programmed for Li-Ion modules and 24 Volt either through programming on the device itself or with a Bluetooth enabled smartphone or tablet.

SMART BATTERY PROTECT 65
 Control Fuse Box

SMART BATTERY PROTECT 220
 Loads 1-11
 SBP 220 IN+
 SBP 220 IN-
 Control Fuse Box



Drawing BJE-284A

IMPORTANT INFORMATION!
 When operating in inverter mode, the Neutral output of a inverter/charger must be connected to ground to guarantee proper functioning of a GFCI or RCCI device. In case of a split phase supply the Neutral also must be grounded.
 The primary Case ground connection from a inverter/charger like a Quattro, must be connected to the Central Negative Busbar of the DC system. Size of this cable must be identical to connected DC negative.

IMPORTANT INFORMATION!
 Recommended DC cable size for Quattro
 With Power assist the Quattro can add 5kW to the output load when needed. Together with the adjustable 100A input this all adds up to the max sum of input and output current of 100+2+121A.
 An Earth leakage device with breaker or a combination MCB/RCD must be installed on the output. Cable size must be adjusted accordingly.

IMPORTANT INFORMATION!
 Recommended AC Out 2 combination size Quattro
 AC Out 2 only is available when power is powered on AC In 1 or AC In 2. During battery operation it will be disconnected.
 AC Out 2 supports up to 60A.
 An Earth leakage device with breaker or a combination MCB/RCD must be installed on the output. Cable size must be adjusted accordingly.

IMPORTANT INFORMATION!
 Recommended DC cable size Quattro
 0.5 m cable length: 4 x 50Qmm 5-10 m cable length: 1 x 90Qmm. When used in battery connected mode, cable size should double. Cable length stands for the distance between the battery and the Quattro connections !!! Recommendations are without other loads in the system and these also should be taken into account for proper main battery, main fuse & main switch cables !!!
 Fuse size should be 1 x 400A.

IMPORTANT INFORMATION!
 Recommended AC In 1 & AC In 2 cable/breaker size Quattro
 AC In 1 & AC In 2 both must be protected by a circuit breaker rated at 100A max or less. This depends heavily on the size of the connected power source. The input currents must be adjusted to fit the size of the connected power source. The breaker load cable size for both AC In 1 & AC In 2 should be adjusted accordingly.

WARNING
 230 VOLT AC IS EXTREMELY HAZARDOUS !!!
 DO NOT TOUCH ANY LIVE WIRED PARTS OF THE INSTALLATION !!!
 WHEN IN DOUBT ALWAYS CONSULT YOUR VICTOR DEALER !!!